

OPENING DOORS SINCE 1843

Loveitts est. 1843
THE ESTATE AGENTS

40 Bristol Road
Coventry, CV5 6LJ

Offers Over £175,000



2



1



2



D

40 Bristol Road

Coventry, CV5 6LJ

A fantastic starter home or investment property.

This traditional mid terrace home is located in the highly regarded area of Earlsdon and is offered with no onward chain.

The accommodation comprises of a lounge, dining room, fitted kitchen and ground floor bathroom. Upstairs are two double bedrooms.

Further benefits include a low maintenance rear garden, gas central heating and double glazing throughout.





- Sought After Location
- Traditional Mid Terrace
- Two Double Bedrooms
- Two Reception Rooms
- Ground Floor Bathroom
- Fitted Kitchen
- Rear Garden
- No Onward Chain

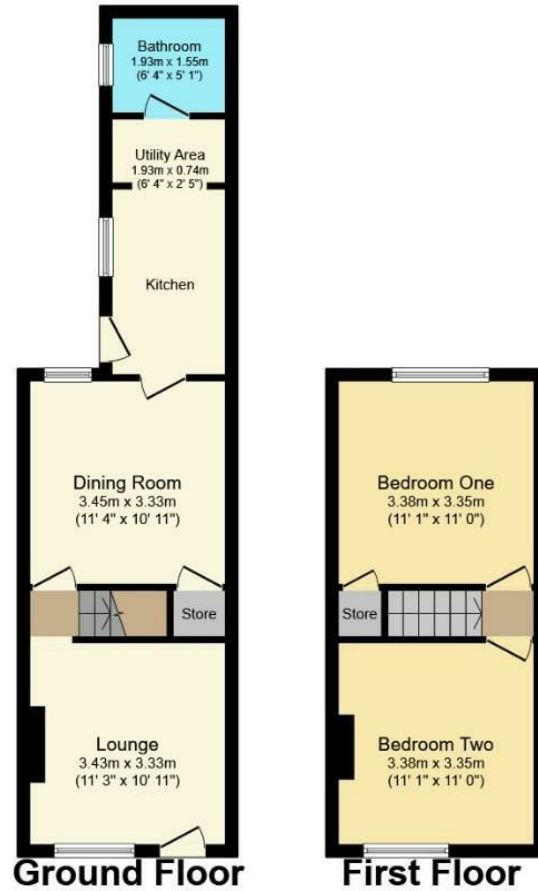


Location

The property occupies a very popular and convenient residential location to the West of the City and is well served by the excellent amenities available within Earlsdon whilst the City Centre is also close at hand.



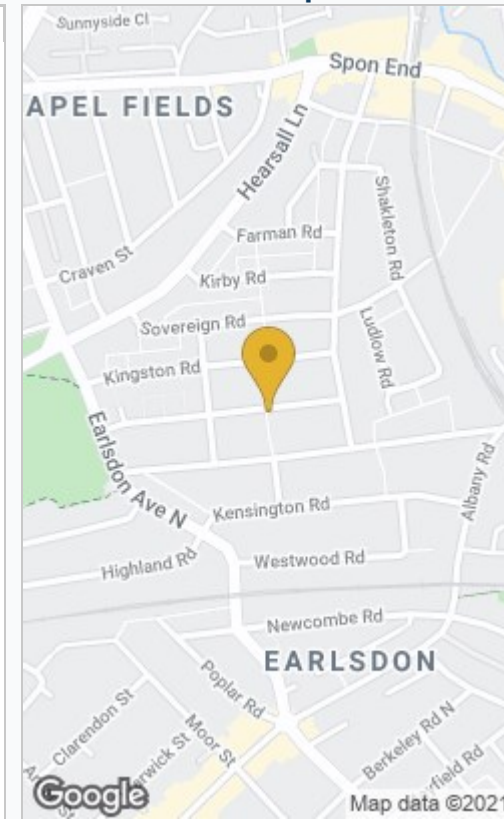
Floor Plan



Total floor area 64.3 sq.m. (692 sq.ft.) approx

This Floor Plan is for illustration purposes only and may not be representative of the property. The position and size of doors, windows and other features are approximate. Unauthorized reproduction prohibited. © PropertyBOX

Area Map



Energy Efficiency Rating

	Current	Potential
Very energy efficient - lower running costs		
(92 plus) A		
(81-91) B		
(69-80) C		
(55-68) D		
(39-54) E		
(21-38) F		
(1-20) G		
Not energy efficient - higher running costs		
	60	79
England & Wales	EU Directive 2002/91/EC	

These particulars, whilst believed to be accurate are set out as a general outline only for guidance and do not constitute any part of an offer or contract. Intending purchasers should not rely on them as statements of representation of fact, but must satisfy themselves by inspection or otherwise as to their accuracy. No person in this firm or its employees has the authority to make or give any representation or warranty in respect of the property.



Coventry
29 Warwick Row, Coventry CV1 1DY
024 7625 8421

Registered in England & Wales Company no. 7558151